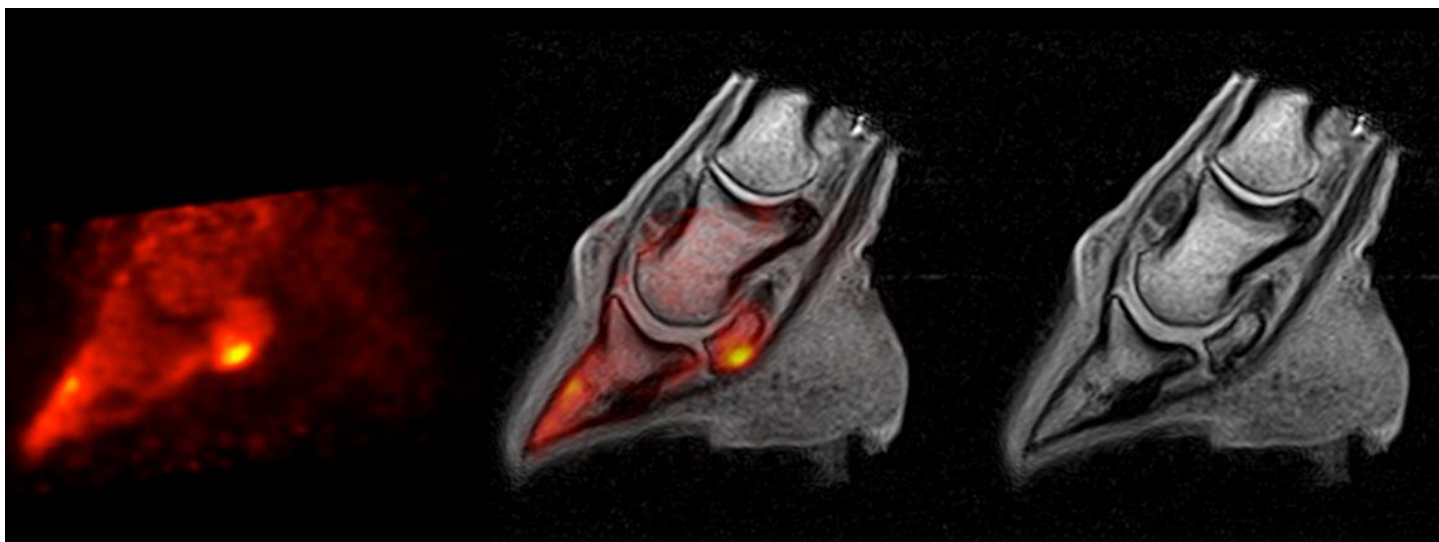


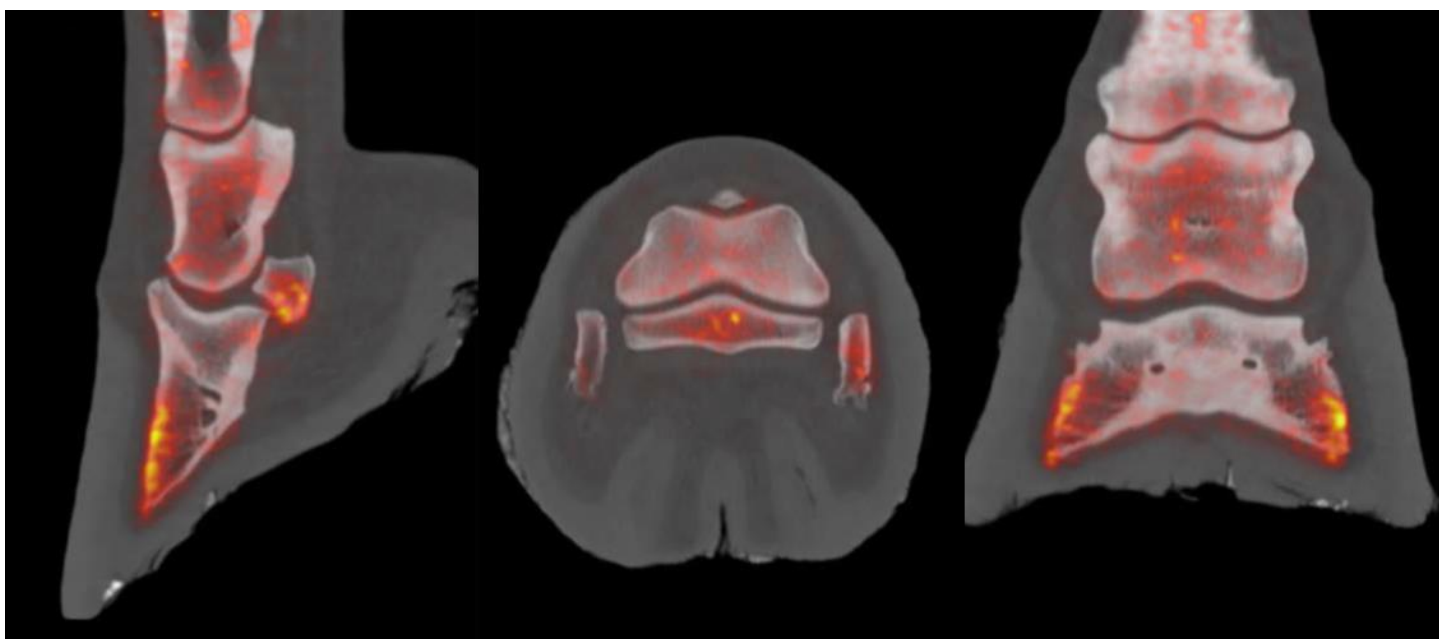
## Multimodality Co-Registration and Fusion Tool with Web Interface

Galatea™ enables multimodal co-registration and fusion in any major web browser. The software supports DICOM and raw data formats. Galatea natively supports all standard orientations of veterinary images.

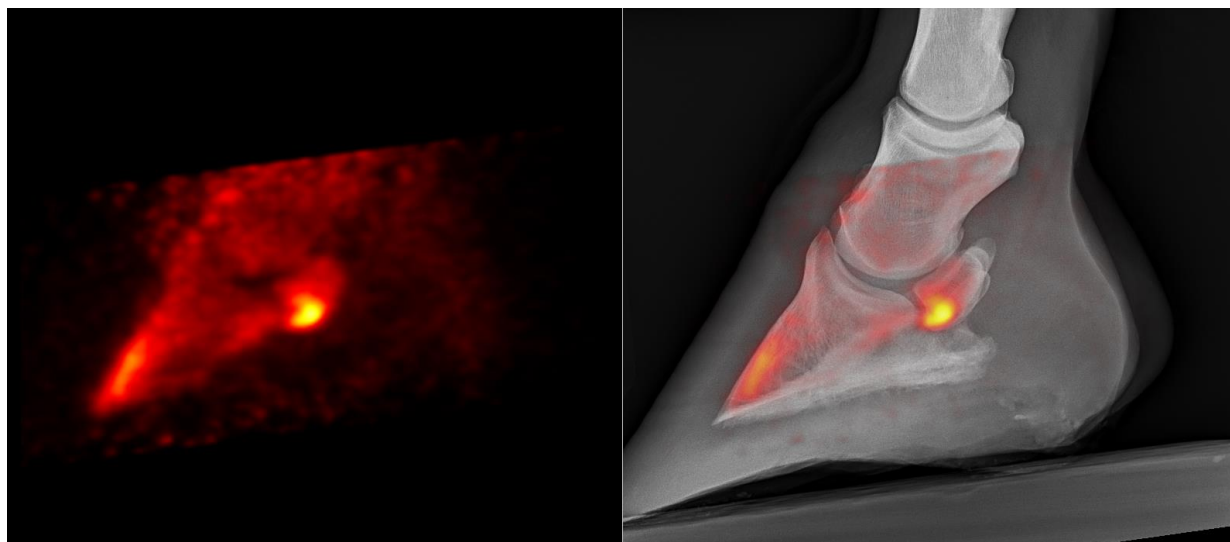
### PET-MRI fusion



### PET-CT fusion



## PET-Radiography fusion



## Technical Specifications

Parameter	Value
Supported web browsers	Firefox, Chrome, MS Edge, Safari
File format	DICOM and raw data
Supported modalities	PET, CT, MRI, Radiography
Co-registration type	Points-based initial co-registration with fine manual alignment
Back-end system requirements	NVIDIA GeForce GTX 1060 Ti+, Ubuntu 16.04+
Installation	Desktop computer or cloud
Viewer tools	Brightness/contrast adjustment, blending tuning, spy eye, various color maps

\* Images courtesy Dr. Spriet, UC Davis School of Veterinary Medicine

## Contact & Visit Info

LONGMILE Veterinary Imaging  
Division of Brain Biosciences, Inc.  
12156 Parklawn Drive, Rockville, MD 20852 USA  
Phone: +1 (240) 426-6021  
[www.longmilevet.com](http://www.longmilevet.com) | [info@longmilevet.com](mailto:info@longmilevet.com)

LONGMILE headquarters, factory, and R&D facility are located in Rockville, Maryland, a suburb of Washington DC. Airports providing best access to LONGMILE are IAD, DCA, and BWI. All LONGMILE customers are offered a factory tour.