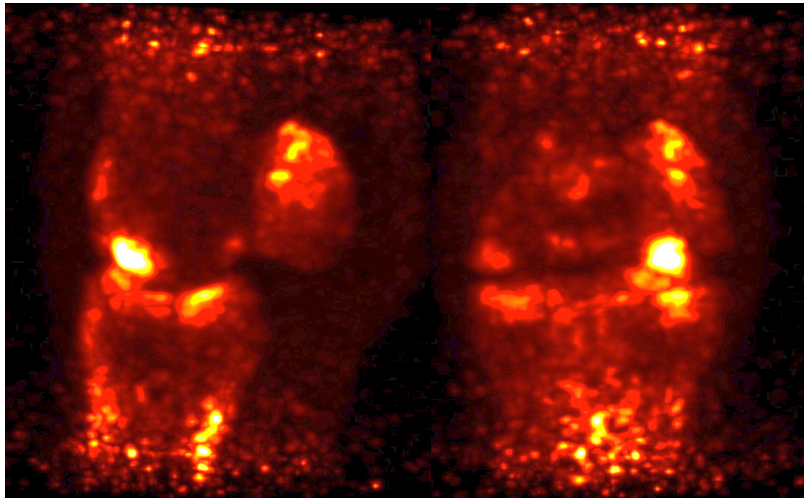


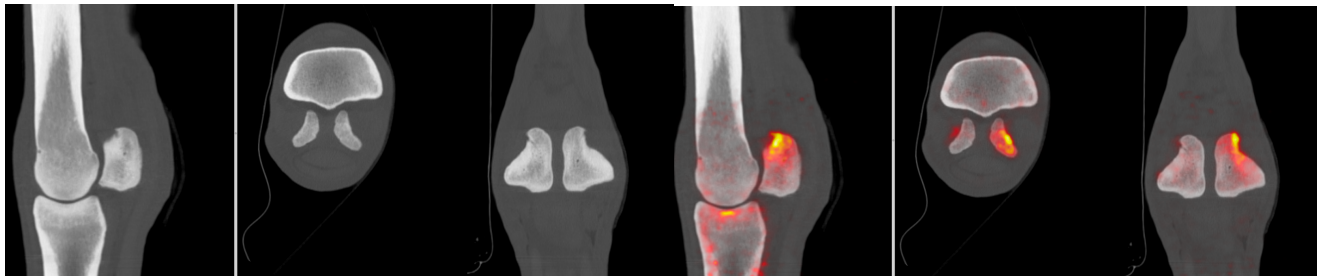
# Equine PET Case

## Dual Tracer Fetlock Study

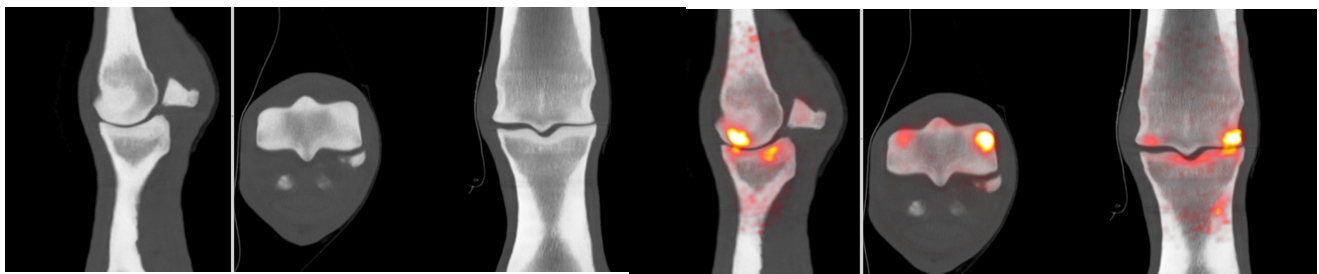
**History:** 8 year old Warmblood jumper. Recurrent 3/5 RF lameness for 6 weeks. Positive to distal limb flexion. Partial improvement with abaxial nerve block, resolution with low-4-point



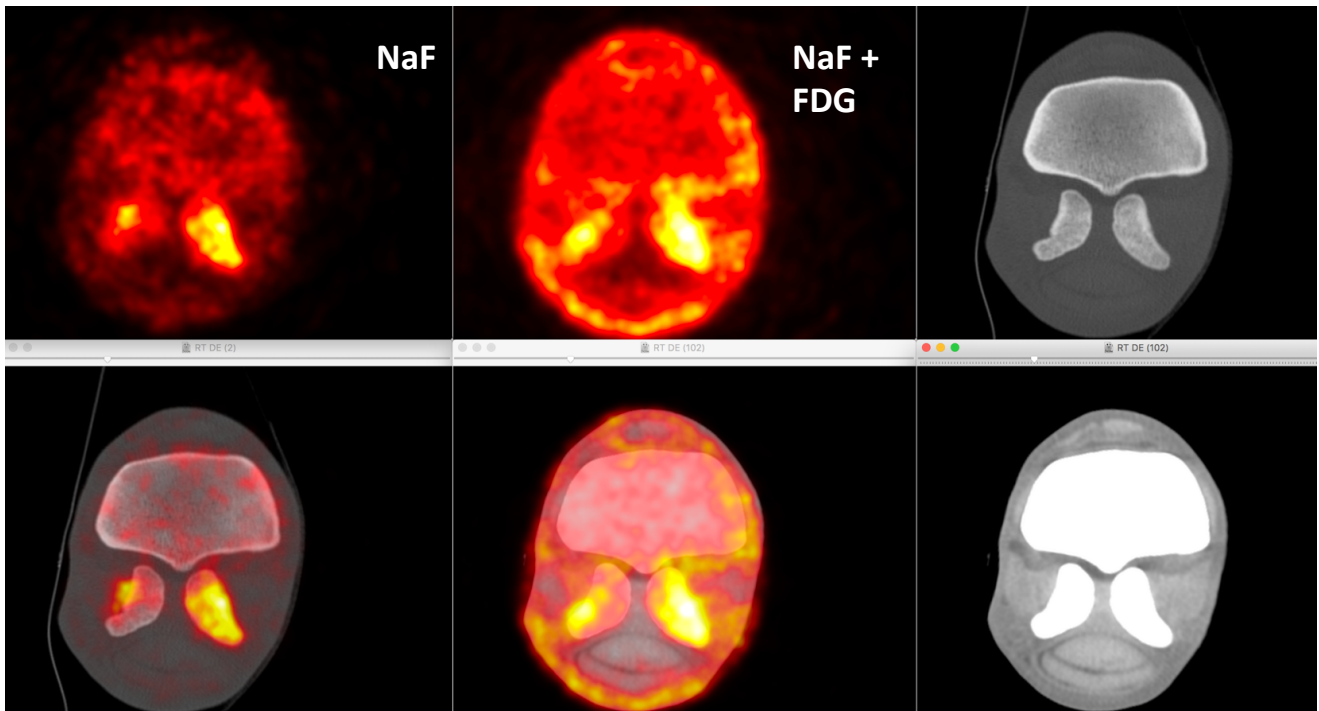
**$^{18}\text{F}$ -NaF PET MIP RF fetlock:** There is marked focal NaF uptake at dorsomedial distal MC3 and to a lesser extent at dorsomedial proximal P1. There is also increased uptake in the medial proximal sesamoid bone.



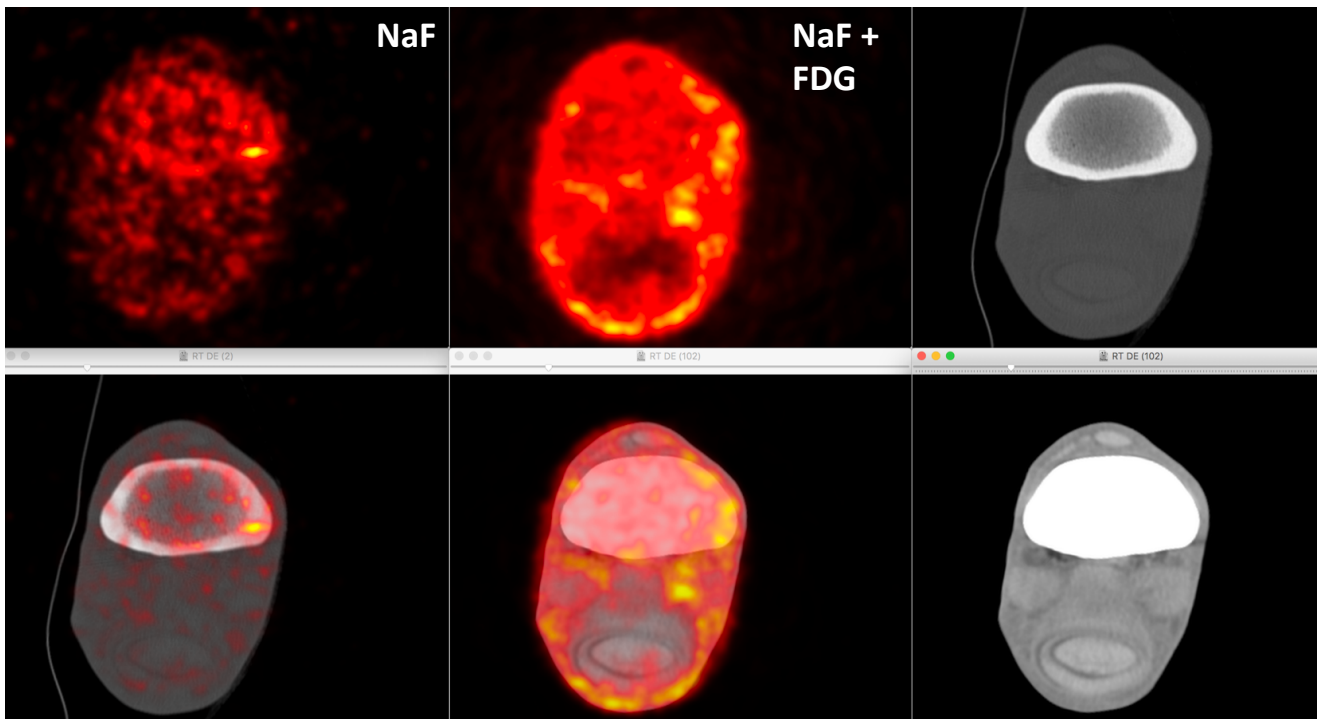
**CT and fused NaF PET/CT MPR:** The NaF uptake of the medial PSB is localized at the abaxial border at the attachment of the suspensory branch



**CT and fused NaF PET/CT MPR:** The fusion confirms the localization of the NaF uptake to the subchondral bone of distal MC3 and proximal P1. There is no evidence of subchondral resorption on the CT, suggesting an early lesion



**Transverse RF Fetlock images:** There is moderate increased  $^{18}\text{F}$ -NaF uptake in the medial PSB and mild uptake in the lateral proximal sesamoid bone, suggesting suspensory insertional desmopathy



**Transverse RF Fetlock images:** There is increased  $^{18}\text{F}$ -FDG uptake in the medial branch of the suspensory ligament, demonstrating an active suspensory branch desmitis