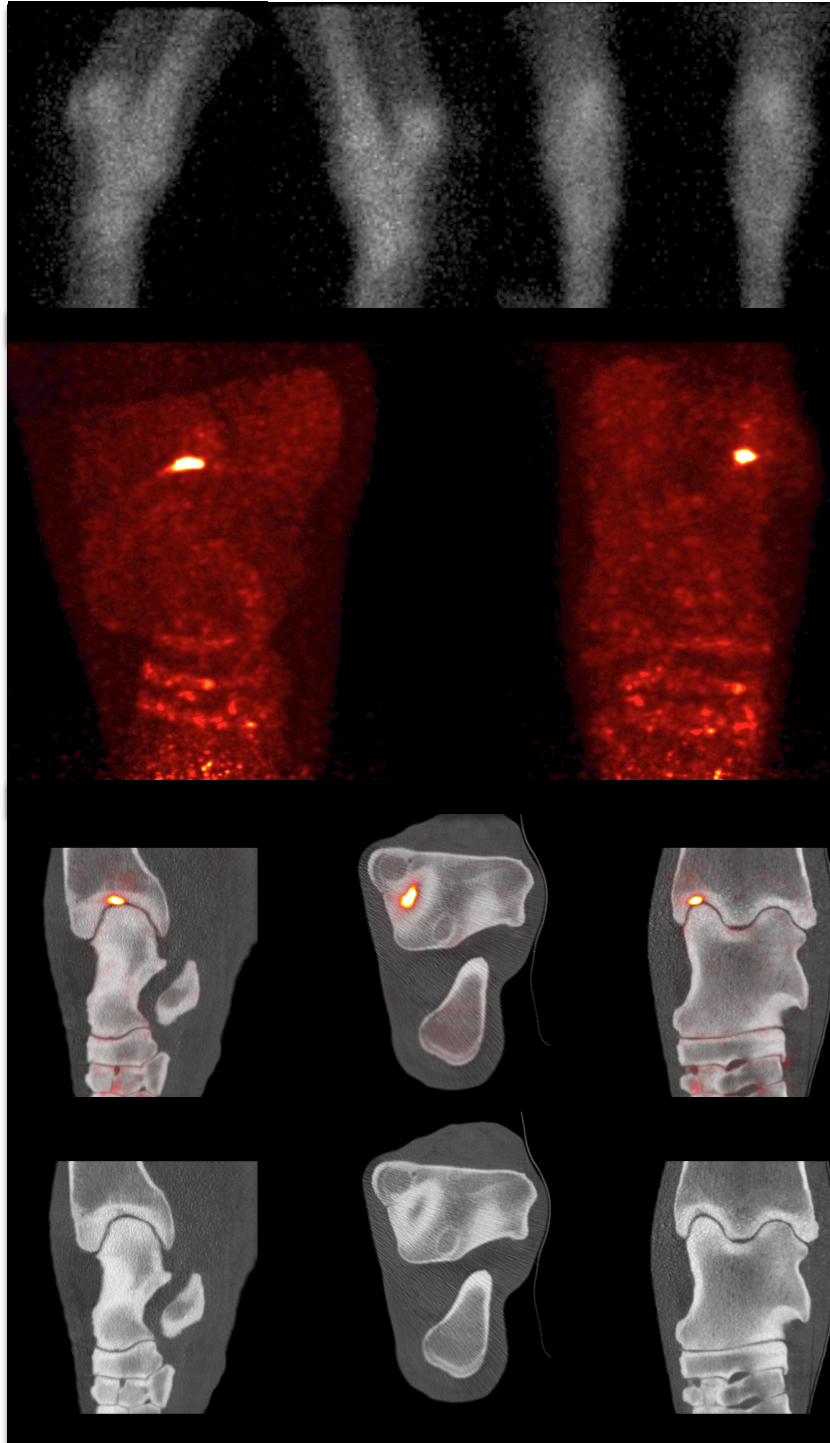


# Equine PET Case

## Subchondral Injury of Distal Tibia

**History:** 9 year old Warmblood hunter-jumper. 4/5 LH lameness acutely 20 minutes into a ride. Positive to LH flexion. Mild improvement with abaxial nerve block, resolution with peroneal-tibial nerve block.



**Bone scintigraphy:**  
no significant abnormality

**$^{18}\text{F}$ -NaF PET MIP of Left Tarsus:**  
There is marked focal increase of  $^{18}\text{F}$ -NaF uptake in the distal tibia

**PET/CT fused MPR:**  
The focal increased  $^{18}\text{F}$ -NaF uptake is localized at the subchondral bone of the medial groove of the distal tibia