

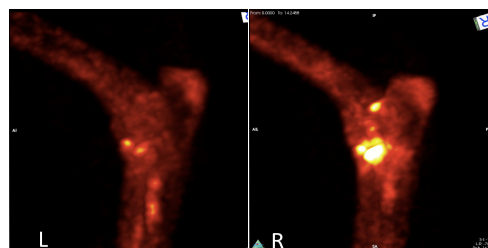
πPET® Scanner

High Resolution PET Scanner for Small Animal Imaging*

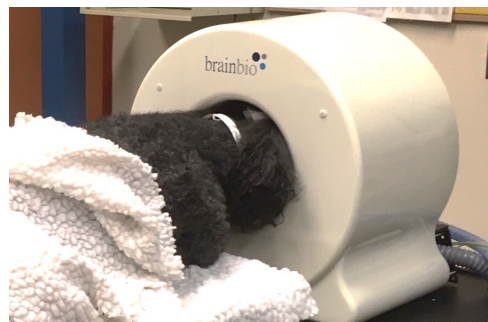
πPET® is a portable, high-resolution Positron Emission Tomography (PET) device for veterinary imaging. πPET® is available in two form-factors: D22 has a 22 cm bore and high count sensitivity, D33 provides 33 cm bore at the same cost. πPET® has been successfully employed for imaging multiple species under anesthesia, including canines, and equines. πPET® has high environmental stability, low power consumption, and can easily be moved within the imaging facility.



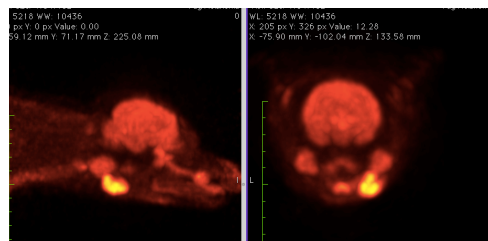
Canine limb positioned in πPET®



¹⁸F-NaF πPET® of canine elbow. Lameness on the right



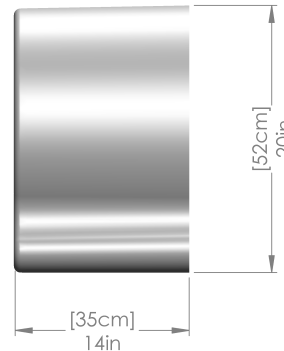
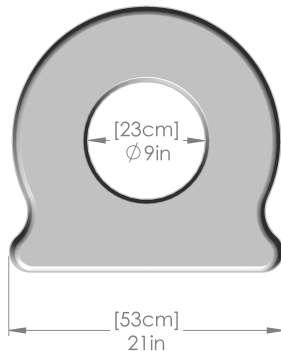
Canine head positioned in πPET®



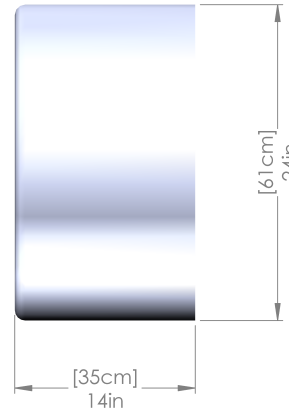
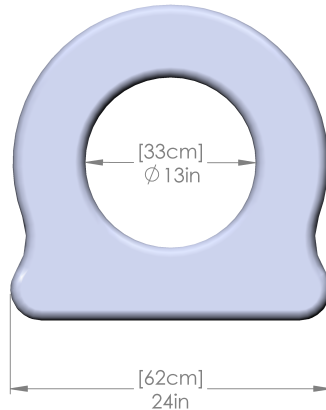
Oral melanoma in canine patient (¹⁸F-FDG)

Parameter	Value
Crystal / Size	LYSO/2x2x13mm ³
Elements	15,210
Photodetector	PMT
FOV Diameter	220 mm (D22) 330 mm (D33)
Axial FOV (stationary/scan)	85/225 mm (D22) 56/196 mm (D33)
Scanner weight:	23 kg
Mounting	Cart, Bed, Tabletop, Custom
PET Data Format	Listmode
Reconstruction	FBP, 3D MLEM
Image Format	DICOM, RAW
Attenuation Correction	Calc, CT, Ge-68 transmission
Resolution Axial	2.0 mm
Resolution Transverse	2.1 mm
Energy Resolution, Window	<16% 430-650 keV
Timing Resolution, Window	1 nsec, 4 nsec
Scanner-Computer Cable	CAT6, up to 100m
Acquisition protocols	Static, Dynamic
Image Viewer	Web viewer included
Transmission scan	Ge-68 line source
Quality Assurance	Ge-68 line source Ge-68 cylinder (quantification)

D22: Portability, High Sensitivity



D33: Wider Bore, Same Low Price



Contact Info

LONGMILE Veterinary Imaging
Division of Brain Biosciences, Inc.
12156 Parklawn Drive
Rockville, MD 20852 USA
Phone: +1 (240) 426-6021
www.longmilevet.com
info@longmilevet.com

Visit Us

LONGMILE headquarters, factory, and R&D facility are located in Rockville, Maryland, a suburb of Washington DC. Airports providing best access to LONGMILE are Washington Dulles International Airport (IAD), Ronald Reagan Washington National Airport (DCA), and Baltimore-Washington International Airport (BWI). Twinbrook Metro Station on the Metro Red Line is within walking distance from our facilities. All LONGMILE customers are offered a factory tour.