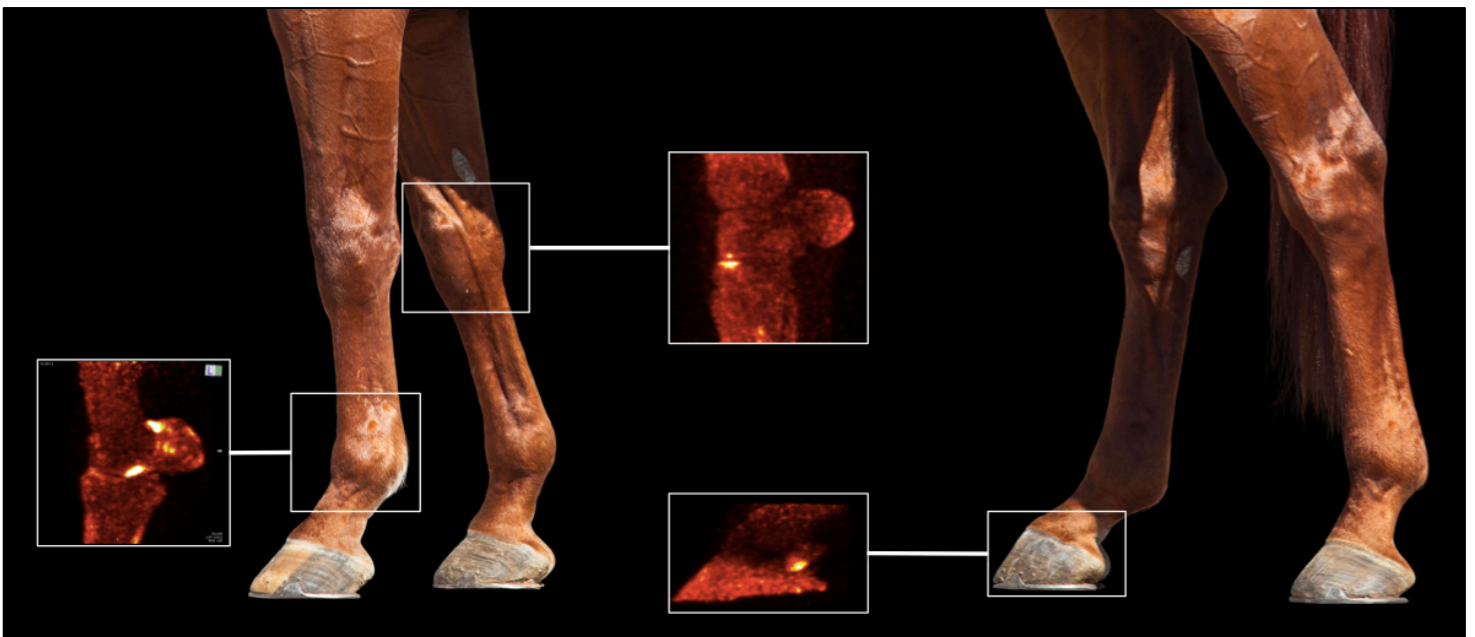


Standing Equine PET

MILE-PET® is the world's only Positron Emission Tomography (PET) device designed for imaging limbs of standing sedated horses. The device is compact, so there are no additional construction costs. Any room (e.g. scintigraphy area) can quickly turn into a PET imaging suite. MILE-PET® has 2 mm spatial resolution, 254 mm bore diameter, and up to 225 mm axial field of view. A mobile device, MILE-PET® can easily be positioned over a limb of a standing, sedated horse. Adjustable detector height allows for access to all joints in the distal limb, including carpus and tarsus. As a safety measure, MILE-PET® detector ring easily opens when the horse decides to step out of the device.



PET Ring Opens for Safety



Technical Specifications

Parameter	Value	Parameter	Value
Crystal / Size	LYSO / 2x2x13 mm ³	Photodetector	PMT
Detector Elements	15,210	Energy Res/Window	13%, 430-650 keV
Axial Resolution	2.0 mm	Timing Res/Window	1 nsec / 4 nsec
Resolution Transverse	2.1 mm (FOV center) 3.1 mm (FOV edge)	Axial FOV	85 mm (stationary) 225 mm (scanning)
PET Bore Diameter	254 mm	FOV Diameter	235 mm
PET Ring Architecture	Openable	FOV Height Range	15 mm - 640 mm from floor
Scanner Weight	160 kg	Quality Control	Ge-68 cylinder
Acquisition protocols	Static, Dynamic	Attenuation Correction	Calc/CT
Reconstruction	3D MLEM	Image Format	DICOM

Adjustable Height



Contact & Visit Info

LONGMILE Veterinary Imaging
 Division of Brain Biosciences, Inc.
 12156 Parklawn Drive, Rockville, MD 20852 USA
 Phone: +1 (240) 426-6021
www.longmilevet.com | info@longmilevet.com

LONGMILE headquarters, factory, and R&D facility are located in Rockville, Maryland, a suburb of Washington DC. Airports providing best access to LONGMILE are IAD, DCA, and BWI. All LONGMILE customers are offered a factory tour.