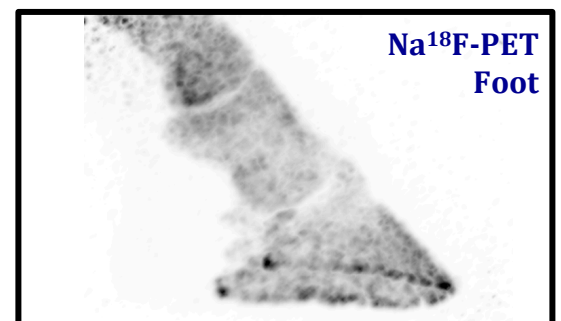
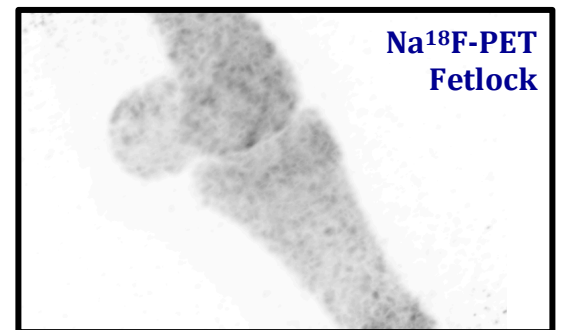
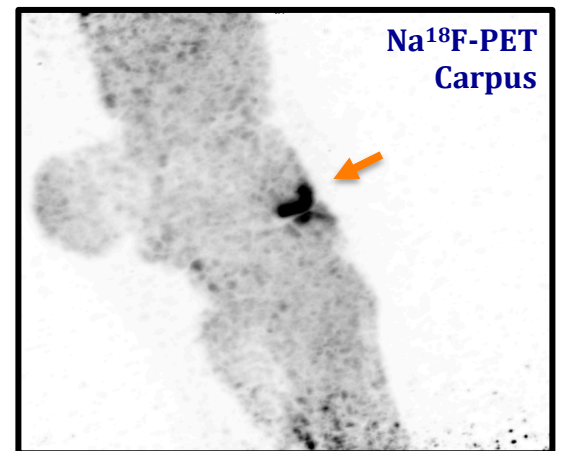


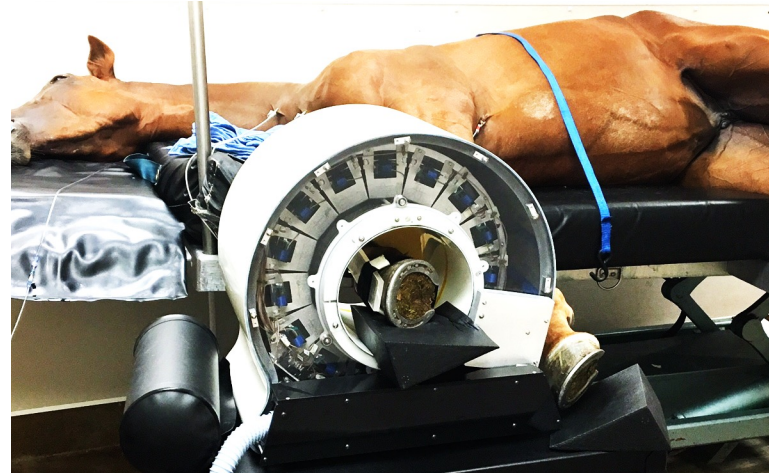
High Resolution PET Scanner for Equine Imaging*

π PET® EQUATION is the only available Positron Emission Tomography (PET) device configured for imaging of equine limb. The device is compact and portable, so there are no additional construction costs, and any room (e.g. scintigraphy area) can quickly turn into a PET imaging suite. π PET® EQUATION has 2 mm spatial resolution, 220 mm bore diameter, and up to 225 mm axial field of view.

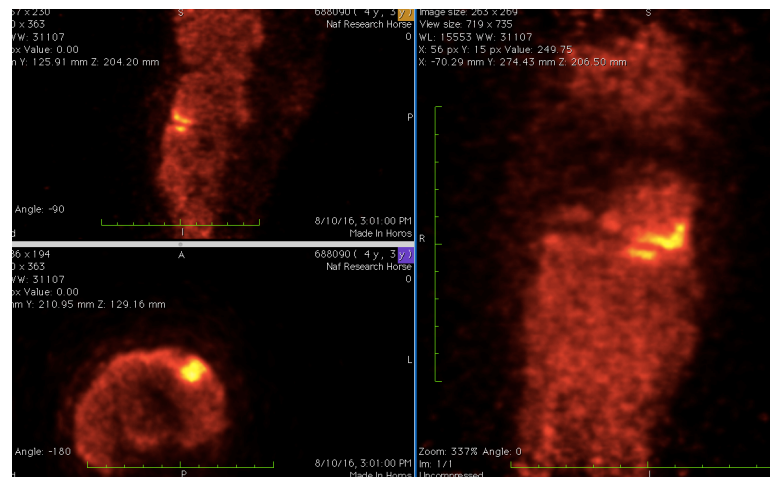


π PET® EQUATION Specifications

Parameter	Value
Crystal / Size	LYSO / 2x2x13 mm ³
Detector Elements	15,210
Photodetector	PMT
FOV Diameter	220 mm
Axial FOV	85 mm (stationary) 225 mm (scanning)
Scanner Weight	23 kg
Mounting	Bed/Tabletop/Custom
Reconstruction	3D MLEM
Data Format	Listmode
Attenuation Correction	Calc/CT/Ge-68 transm
Axial Resolution	2.0 mm
Resolution Transverse	2.1 mm (FOV center) 3.1 mm (FOV edge)
Energy Res/Window	13%, 430-650 keV
Timing Res/Window	1 nsec / 4 nsec
Transmission Scan	Ge-68 line source
Quality Control	Ge-68 line source Ge-68 cylinder
Acquisition protocols	Static, Dynamic
Image Format	DICOM



Patient positioned in π PET® EQUATION



¹⁸F-NaF PET Scan of Equine Carpus

Contact Info

LONGMILE Veterinary Imaging
12156 Parklawn Drive
Rockville, MD 20852 USA
Phone: +1 (240) 426-6021
www.longmile.com
info@longmile.com

Visit Us

LONGMILE headquarters, factory, and R&D facility are located in Rockville, Maryland, a suburb of Washington DC. Airports providing best access to LONGMILE are Washington Dulles International Airport (IAD), Ronald Reagan Washington National Airport (DCA), and Baltimore-Washington International Airport (BWI). Twinbrook Metro Station on the Metro Red Line is within walking distance from our facilities. All LONGMILE customers are offered a factory tour.